



Welcome

**Te Hopai Trust Board
Public Board Meeting
Wednesday 3rd July 2024**



General Manager's report



Key focus for 2023/2024: Staffing



General Manager's report



Key focus for 2023/2024: Staff training



Our comprehensive training programme includes:

- Dedicated Training Manager
- Special dementia training for the Kōwhai unit
- External training through Careerforce and Ignite
- Postgraduate studies for registered nurses.

General Manager's report



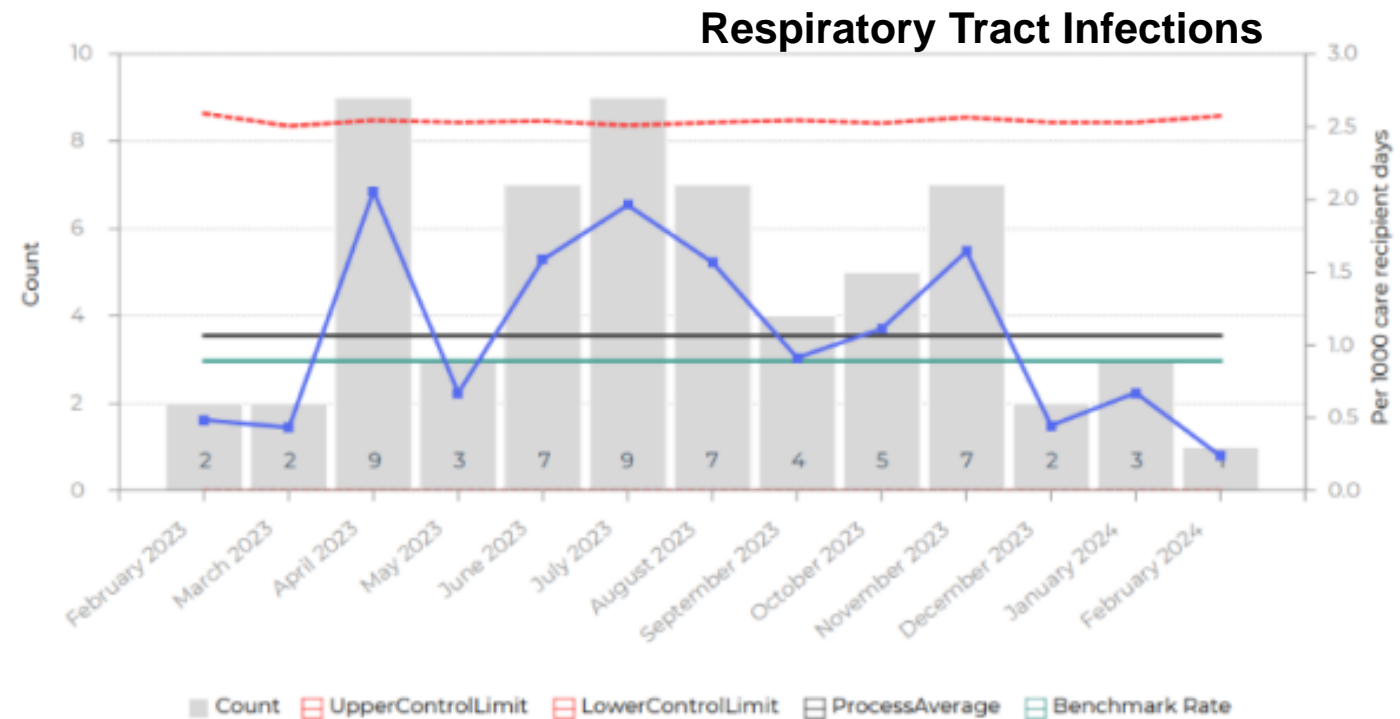
Key focus for 2023/2024: Volunteers



General Manager's report



Key focus for 2023/2024: Covid-19 and Infection control



General Manager's report

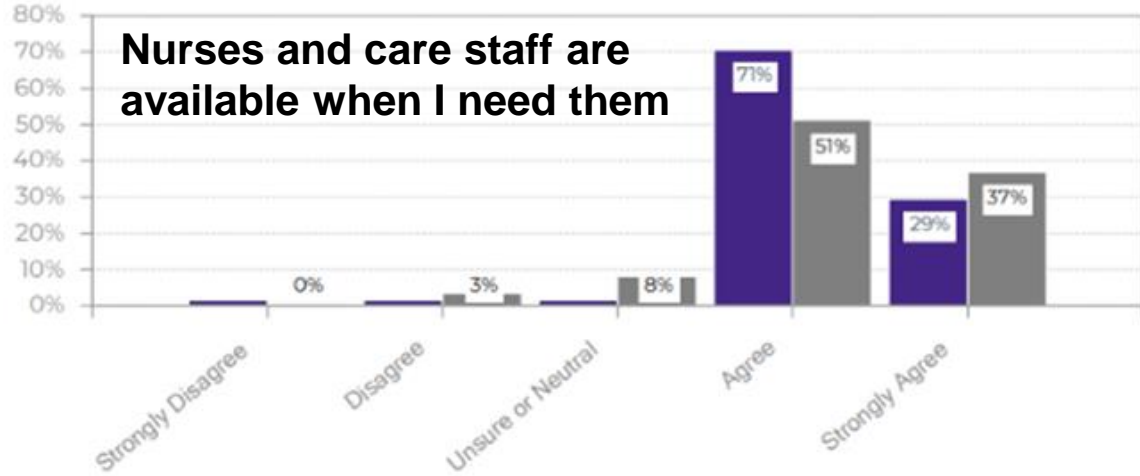


Key focus for 2023/2024: Food services

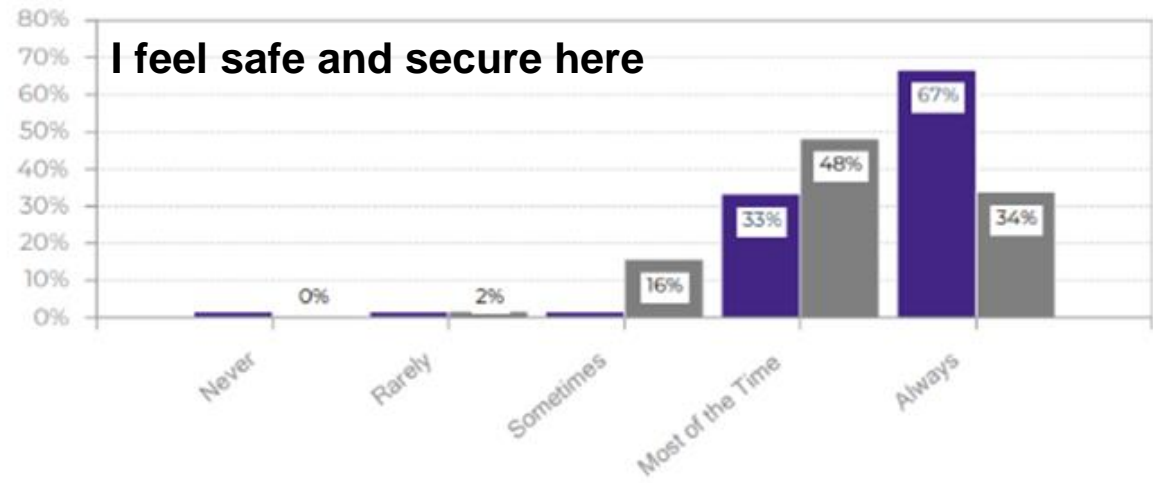
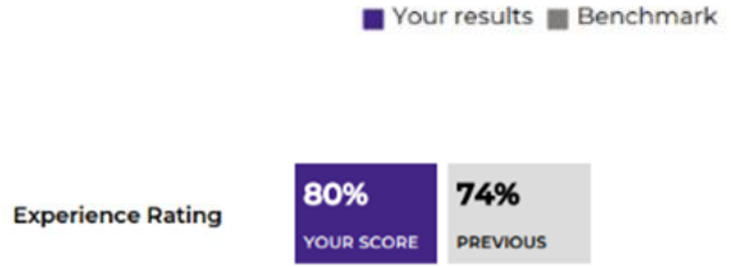


Thursday	Friday	Saturday	Sunday
Cheese Scones	Sausage Rolls	Savoury Muffins	Cheese and Onion Toast
Honey Pork Braise	Crumbed Fish Or Battered Fish	Argentine Beef	BBQ Roast Chicken
Honey Tofu braise	Vegetarian Sausages	Chickpeas with Ratatouille	Roast Veggie and BBQ Tofu
Pork	Fish	Beef	Chicken
Pumpkin	Coleslaw or Green Salad	Beans	Roasted Root Vegetables
Broccoli	Beetroot	Cauliflower	Peas
Roasted Potatoes	Chips	Mashed Potatoes	Roasted Potatoes

General Manager's report – resident and family feedback



SENTIMENT	EXPERIENCE RATING
4.29 YOUR SCORE	100.0% YOUR SCORE
4.19 PREVIOUS SCORE	84.6% PREVIOUS SCORE
4.21 BENCHMARK	88% BENCHMARK



SENTIMENT	EXPERIENCE RATING
4.67 YOUR SCORE	100.0% YOUR SCORE
3.62 PREVIOUS SCORE	65.4% PREVIOUS SCORE
4.13 BENCHMARK	82% BENCHMARK

■ Your results ■ Benchmark

Chairperson's report



Clinical Advisory Committee

- Meets biannually or as required with our purpose to:
 - Provide clinical governance advice to the Board
 - Support, monitor & ensure safe, high quality care
 - Report to & offer advice to the Board on clinically related matters.



Supported by:

- Pakize Sari and Jill Kerridge
- Our General Practitioners Dr Dave Pickett and Dr Andrea Crighton



Clinical Advisory Committee

Overview of responsibilities

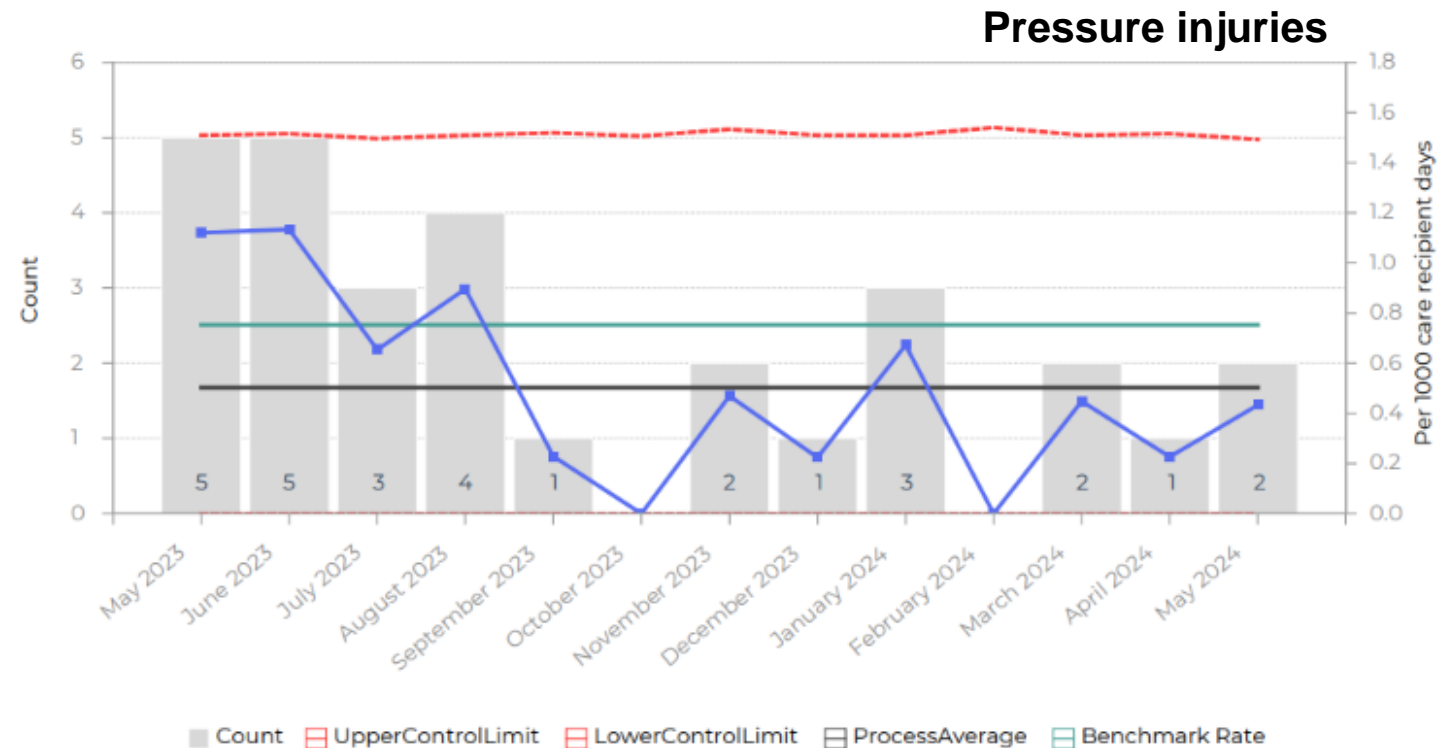
- Review compliance with clinical governance & regulatory responsibilities
- Review resident/whānau satisfaction surveys, incidents and feedback
- Review workforce recruitment, engagement & retention.



Clinical Advisory Committee

Summary of activity in the past three years (and ongoing)

- Transition from Covid 19 response to BAU
- Focus on workforce
- Compliance with Nga Paerewa Health & Disability sector standards, 2023
- Focus on resident safety & quality measures.



Cultural Safety Committee



Supported by:

- Pakize Sari
- Several of our staff members



Property Committee



Supported by:

- Pakize Sari and Amy Fanning
- Various consultants including architects, engineers and valuers

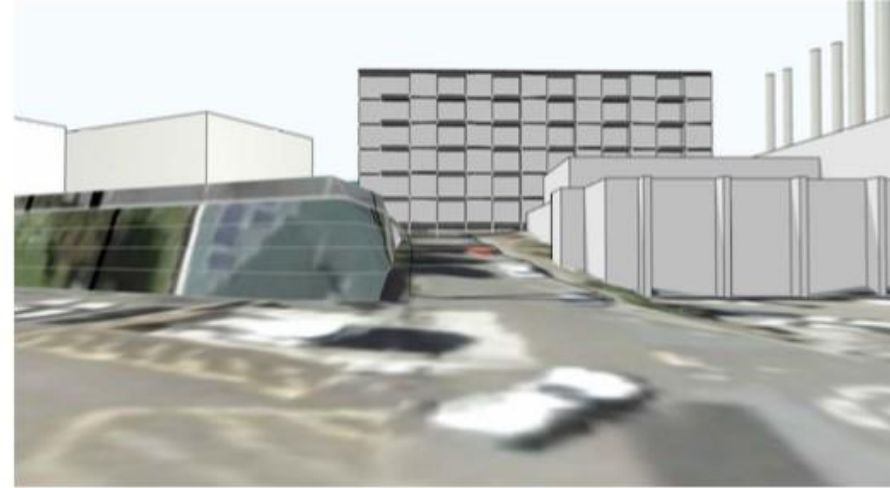




Costing Exercise
Primary Option - 3D

studiopacificarchitecture

Blue = Circulation



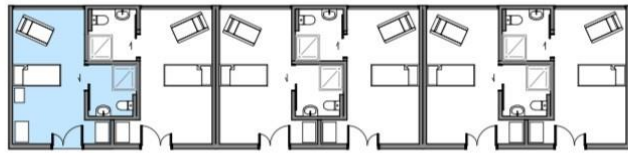
Looking over Te Hopai Carpark

From Hospital Car Park

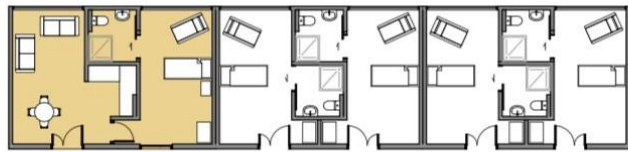


From Owen St

From Town Belt Trail



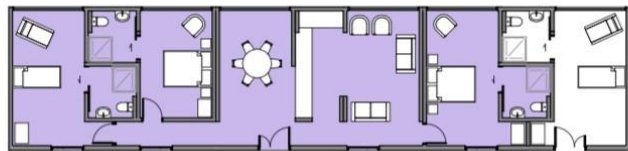
1 bedroom (bedsit) 22.1m² / 22.5m²



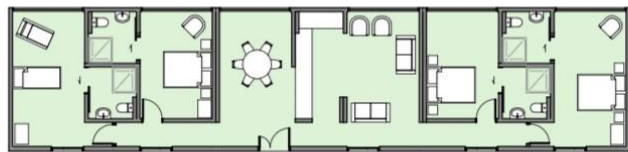
1 bedroom (apartment) 44.6m²



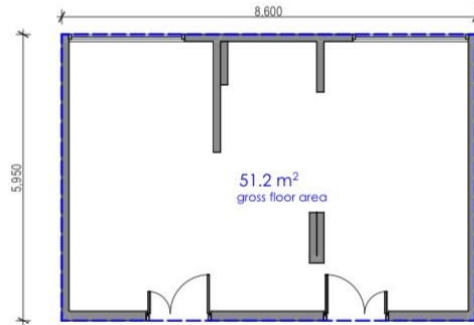
2 bedroom unit 67m²



3 bedroom unit 111.3m²



4 bedroom unit 133.8m²



concept "unit module" - base layout



proposed bedsit layout



proposed 1 bedroom apartment



existing Owen Street bedsit



Fundraising Committee



- Current funding rates don't cover costs
- Accommodation supplements have helped
- We either need to fundraise OR lower our standards – and we're NOT prepared to do the latter!


Supported by:

- Pakize Sari



Fundraising committee actions



-
- The Board Fundraising Committee assists management in generating additional funds – from philanthropists, grants, whānau of current & former residents.
 - We created documents that help us show others why Te Hopai is different from other aged care facilities.
 - Individuals and grant decision makers have responded positively.
- 


As a charity, we need funds



Te Hopai must gather more funds each year than we need.

We must regularly make a “profit”, to enable Te Hopai to continue to reinvest in our mission.

We need a **steady and predictable revenue stream** to pursue our goal; to fulfil our purpose of providing quality residential care to ALL Wellingtonians who need it.





Upcoming projects

- Purchasing a new van
- Counselling support for staff
- Staff fund to surprise & delight
- Bariatric equipment
- Thermal scanning
- Professional development fund
- Quality of life items
- Translation of key docs

Finance and Audit Committee

- Provides advice and information to the Board on financial related matters, such as:
 - Reviewing and recommending the annual budget and insurance coverage
 - Reviewing and approving the annual accounts
 - Monitoring regular financial reporting and KPIs
- This year special projects have included:
 - Reviewing nurse pay disparity calculations
 - Reviewing analysis for proposed development.



Supported by:

- Pakize Sari, Dean Riddell and Amy Fanning
- External auditors Deloitte



Financial drivers - occupancy



General business and questions

Thank you for joining us for
our first public Board
Meeting

Please join us now for
drinks and kōrero

